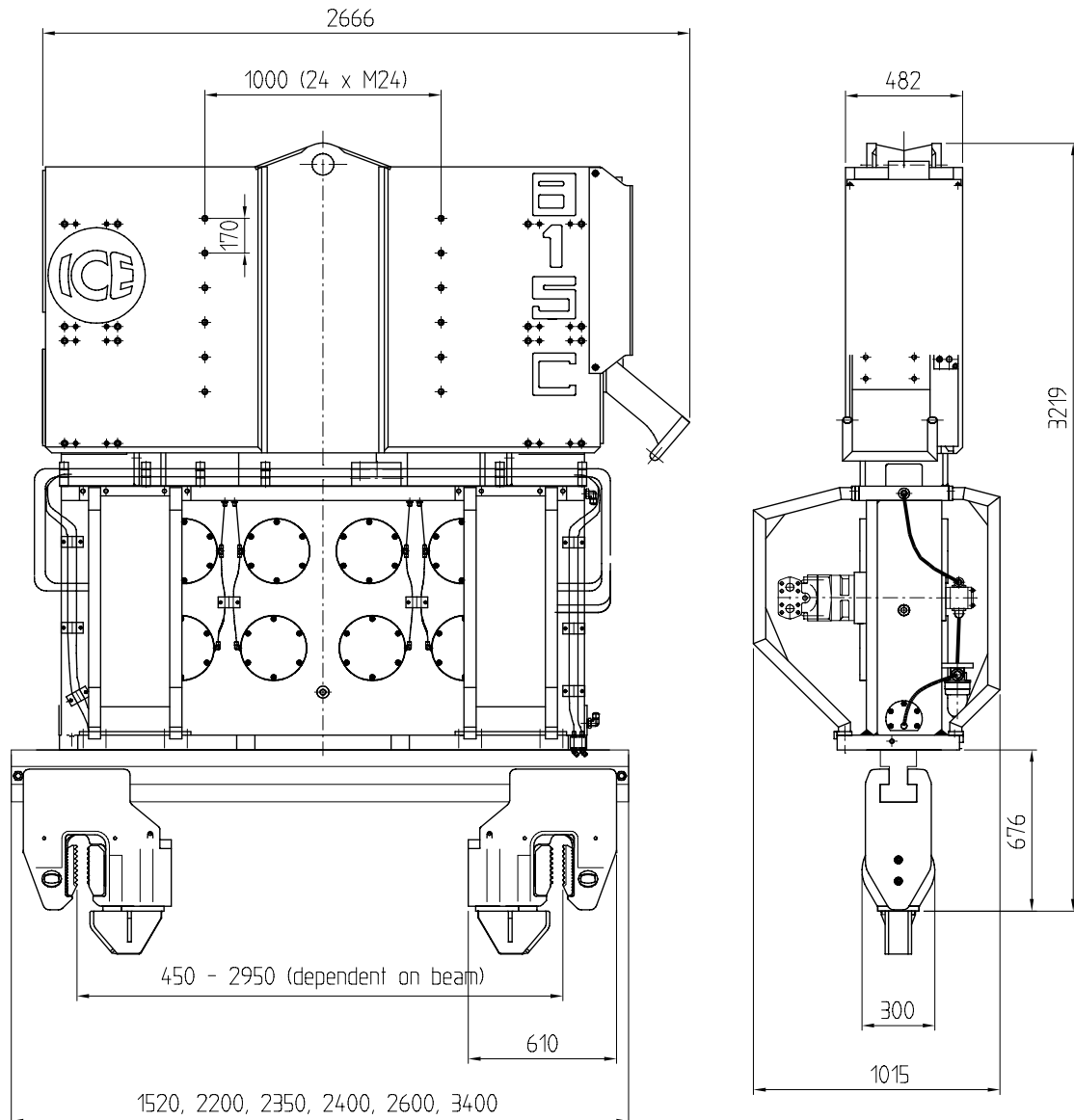




PILEQUIP AUSTRALIA PTY LTD
 ABN 72 003 477 898
 39 Chapman Road, Vineyard NSW
 PO Box 976
 WINDSOR NSW 2756
 Tel: +61 (0) 2 9838 3144
 Fax: +61 (0) 2 9838 3150
 Email: info@pilequip.com.au
 Website: www.pilequip.com.au

ICE 815C



Specifications:

Eccentric moment	:	46	kgm
Max. centrifugal force	:	1250	kN
Max. frequency	:	1570	RPM
Max. amplitude excl. 160TU	:	23.5	mm
Max. amplitude incl. 160TU	:	18.0	mm
Max. static line-pull	:	400	kN
Max. hydraulic power	:	346/470	kW/HP
Max. operating pressure	:	340	bar
Max. oil flow	:	610	l/min
Dyn. weight excl. 160TU	:	3950	kg
Dyn. weight incl. 160TU	:	5050	kg
Total weight incl. 160TU	:	8550	kg
Transport weight	:	9250	kg

Clamps :

Universal	:	160TU	
Weight	:	1100	kg
Caisson cl.	:	2 x 81TC	
Weight	:	1410	kg

Powerpack :

Model	:	ICE 500PP	
Power	:	373/507	KW/HP
Weight	:	6800	kg

Forced lubrication :

Max. oil flow	:	14	l/min
---------------	---	----	-------